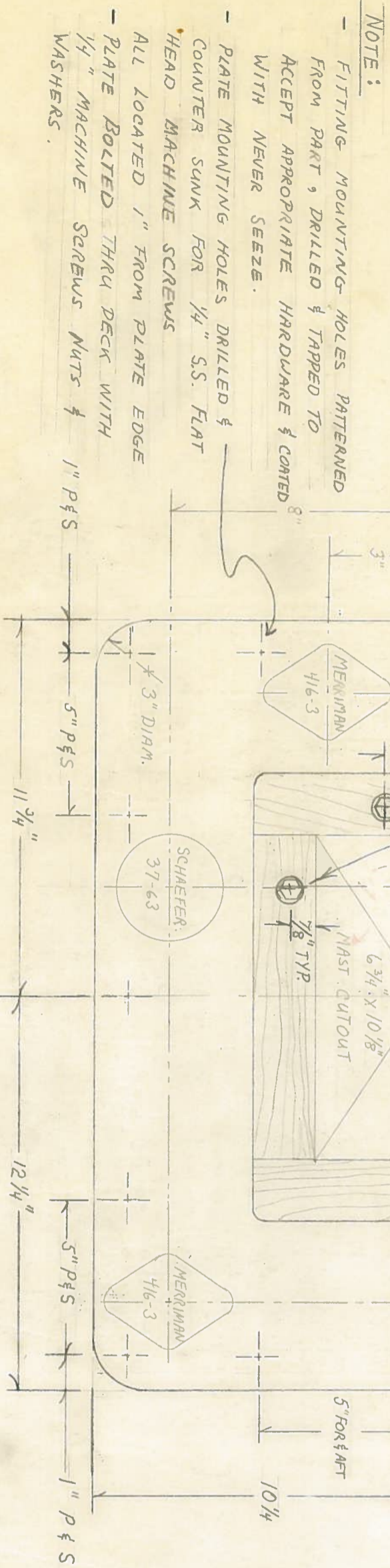


3 TIE ROD HOLES DRILLED TO
 $\frac{3}{8}$ " - NUTS TO SEAT ON ALUMI
 PLATE



- NOTE:
- FITTING MOUNTING HOLES PATTERNED FROM PART, DRILLED & TAPPED TO ACCEPT APPROPRIATE HARDWARE & COATED WITH NEVER SEEZE.
 - PLATE MOUNTING HOLES DRILLED & COUNTER SUNK FOR 1/4" S.S. FLAT HEAD MACHINE SCREWS
 - ALL LOCATED 1" FROM PLATE EDGE
 - PLATE BOLTED THRU DECK WITH 1/4" MACHINE SCREWS NUTS & 1" P&S WASHERS.

MATERIAL:
 3/8" ALUMINUM PLATE
 RADIUS TOP PERIMETER
 EDGE: MAST COLLAR

WEST INDIES 36-015 MAST COLLAR
 SCALE 3" = 12" DATE 10-27-76
 DRAWN BY C.W.H.