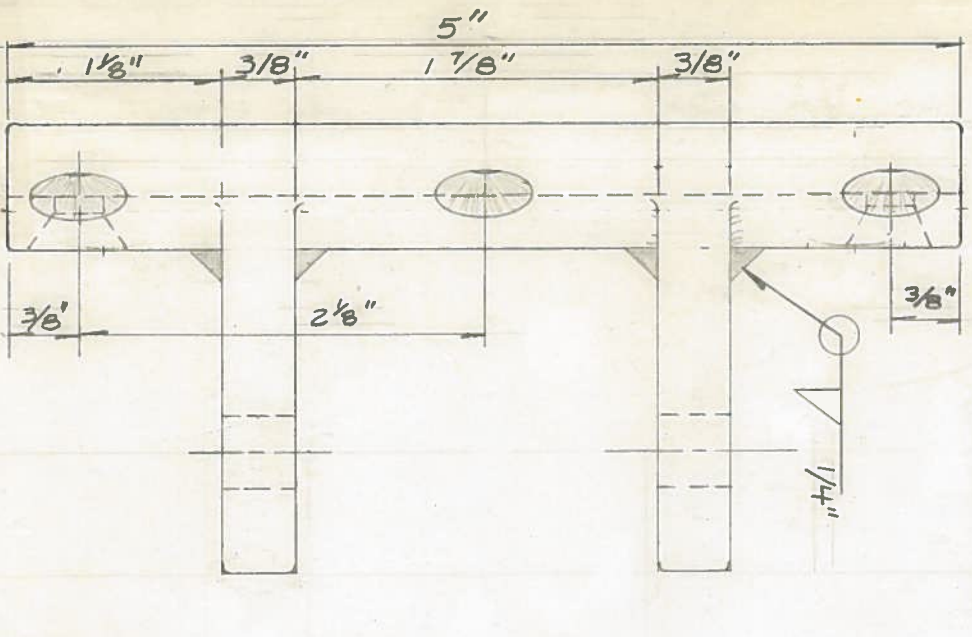
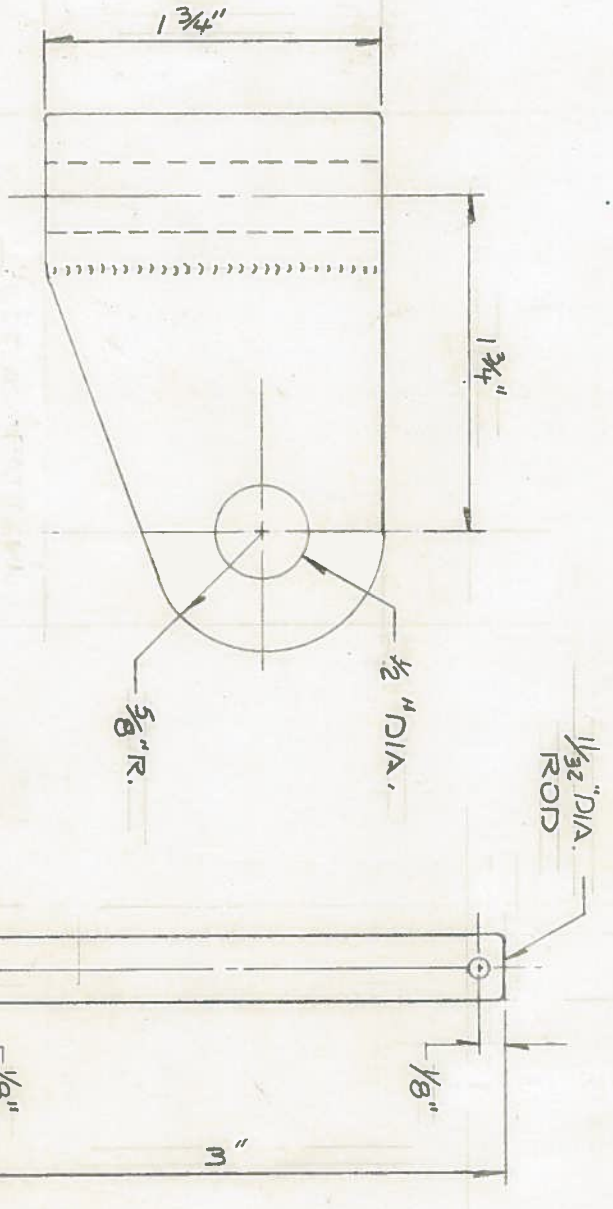


- MATERIALS
- 1) 3/8" ALUM #6061 STOCK
 - 2) 1/4" ALUM. #6061 STOCK
 - 3) 1/32" DIA. STAIN. STL. 304
 - 4) 1/8" O.D. x 1 3/4" LONG ALUM. ROD #6061
- } SHOULD BE S.S.



MAKE 1/4" PLATE
3 1/2" WIDE & 5" LONG



1/8" x 1 1/4" COTTER PIN

WANG GOOSENECK CORPORATION	
12900-G AUTOMOBILE BLVD, CLEARWATER, FLA. 33520 1-813-577-3931	
Project title	Project no.
W.I. 36/38	109
drawing no.	revision
109-B-28	
scale	date
FULL	11-22-76
approved	date
	drawn by
	R.K.D.
	preliminary