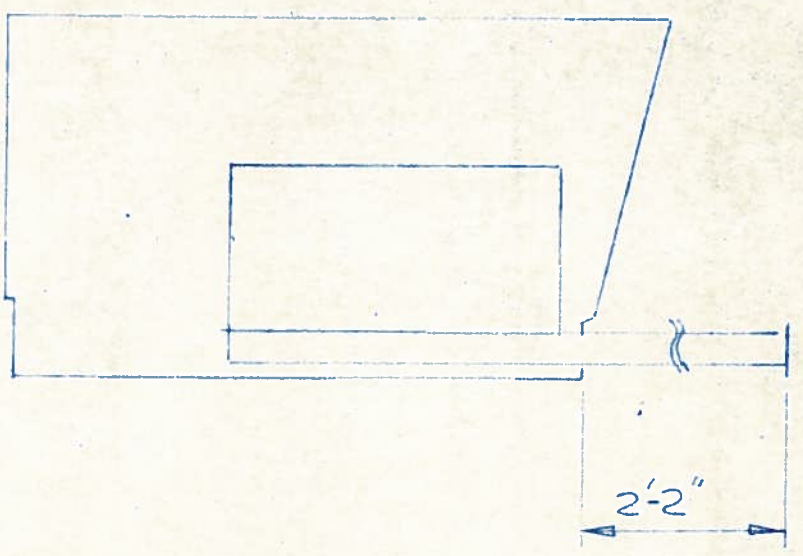


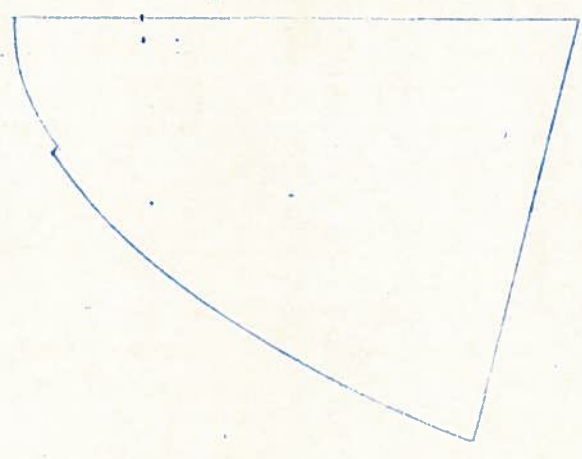
RUDDER



2 PC - 25" x 45" (PART) - 1 1/2 MAT
 4 PC - " " - 3/4 MAT
 6 PC - " " - 22 ROV
 (ALL QUANTITIES ARE FOR 2-HALVES)

LAMINATION -
 1 1/2 MAT
 22 ROV
 3/4 MAT
 22 ROV
 3/4 MAT
 22 ROV

SKEG



2 PC - 32" x 45" (PART) - 1 1/2 MAT
 6 PC - " " - FORTISIL 1310

LAMINATION -
 1 1/2 MAT
 1310 FORTISIL
 1310 FORTISIL
 1310 FORTISIL

CENTERBOARD



2 PC - 20" x 68" - 1 1/2 MAT
 4 PC - " " - 3/4 MAT
 6 PC - " " - 22 ROV

LAMINATION -
 1 1/2 MAT
 22 ROV
 3/4 MAT
 22 ROV
 3/4 MAT
 22 ROV

ON EACH - FILL WITH COMPOUND, INSTAL SHAFT OR RE-INFORCING STEEL (CHECK ALIGNMENT), CLAMP HALVES TOGETHER IMMEDIATELY, BE SURE FACES OF MOLD ARE FLUSH & FREE OF COMPOUND. - LEAVE AT LEAST 8 HRS. (SEE INDIVIDUAL DETAIL DRAWINGS FOR STEEL DETAILS)

ALL QUANTITIES ARE FOR 1-SIDE.

HERITAGE YACHT CORP.

30'38" WEST INDIES

RUDDER, SKEG, & C'BOARD LAMINATION

CHICK 11.17.76 PROJECT 109,119